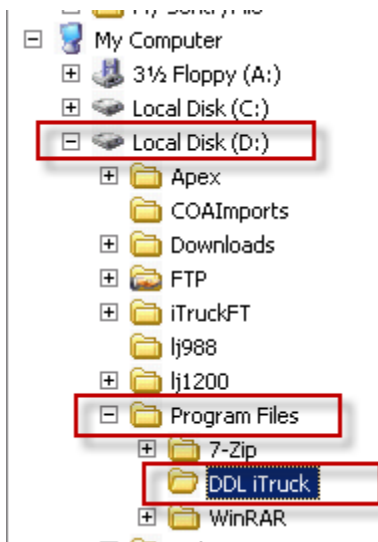


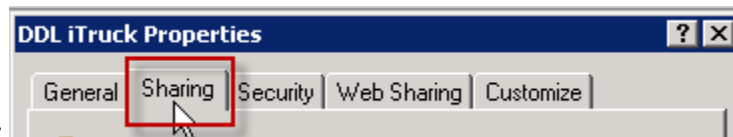
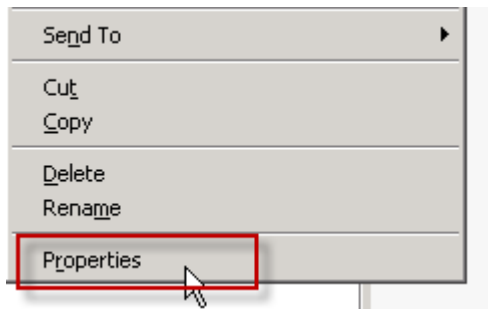
Configuring DDL iTruck To Run on a Windows2003 Server

Share Settings For DDL iTruck On The Network:

Locate the folder where the DDL iTruck program was installed.

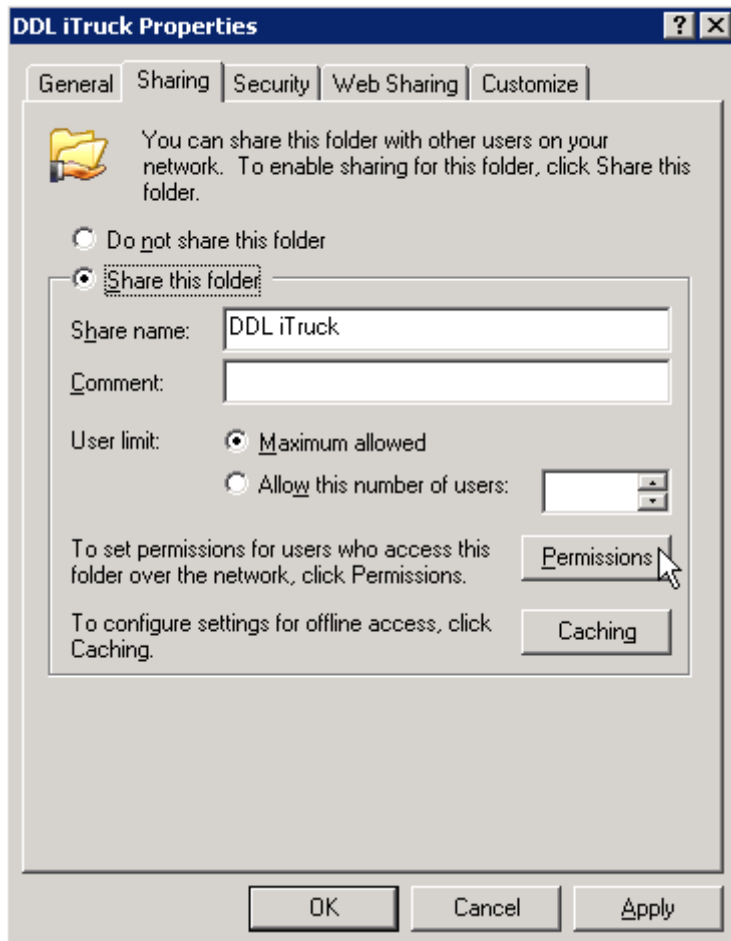


Right click on the DDL iTruck folder and choose Properties



Click on the Sharing Tab:

Configuring DDL iTruck To Run on a Windows2003 Server

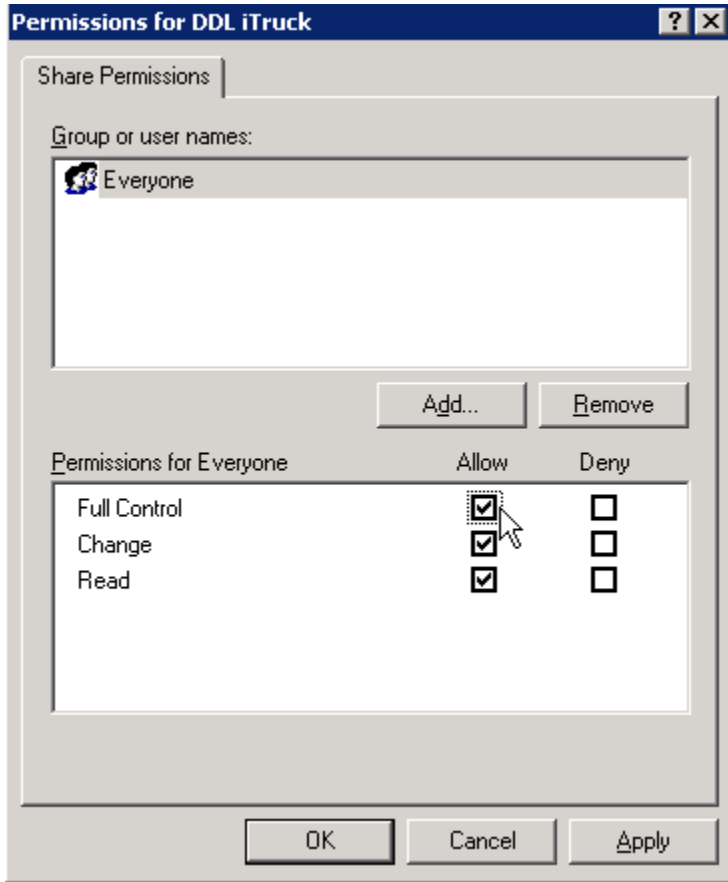


Click the radio button for 'Share this folder'.

Enter the Share Name or let it default as DDL iTruck.

Next, click on the  button.

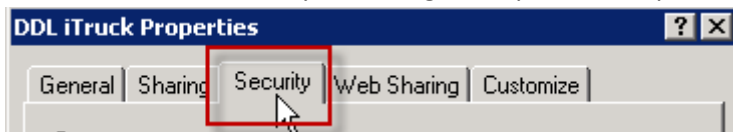
Configuring DDL iTruck To Run on a Windows2003 Server



Set the Everyone group to [x] Full Control (Allow) or at a minimum set the Allow column to [x]Change and [x] Read. Remember, you are only setting the permissions for the DDL iTruck folder of the network when placing these settings.

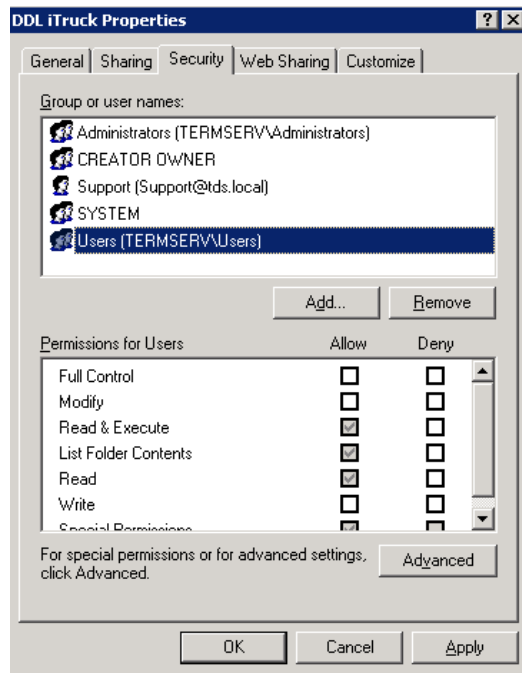
Click  and .

Next, click on the Security Tab along the top of the Properties Window:



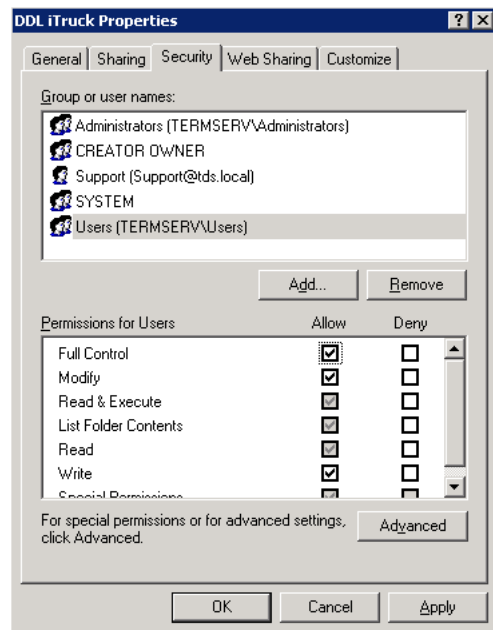
Configuring DDL iTruck To Run on a Windows2003 Server

Next, highlight the appropriate users group in the top panel, exposing the permissions for that group in the bottom panel:



Click the box in the Allow column and set [x] Full Control for the group that will access the DDL iTruck program. At a minimum, the all other boxes other than Full Control should be checked when done.

Completed Example (below):



Click  and .

Remember, you are only setting the permissions for the DDL iTruck folder of the network when placing these settings.

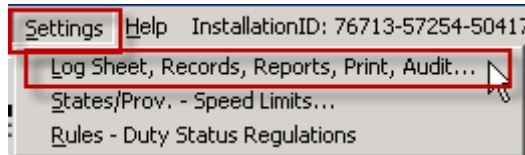
Configuring DDL iTruck To Run on a Windows2003 Server

Setting DDL iTruck For LAN Use:

Next, launch the DDL iTruck program from the shortcut created on the server's desktop.

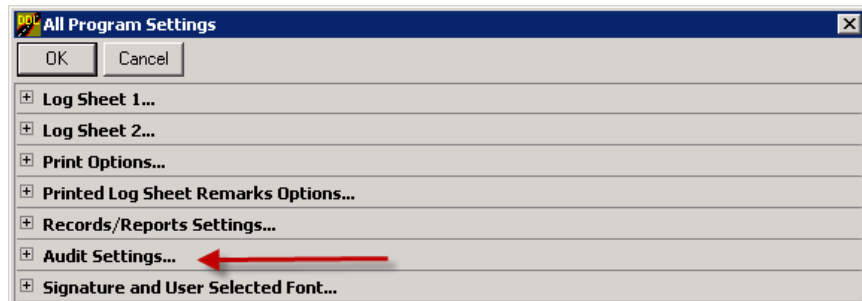
Navigate through the initial request screens until you can choose selections from the top of the screen.

Click on Settings:

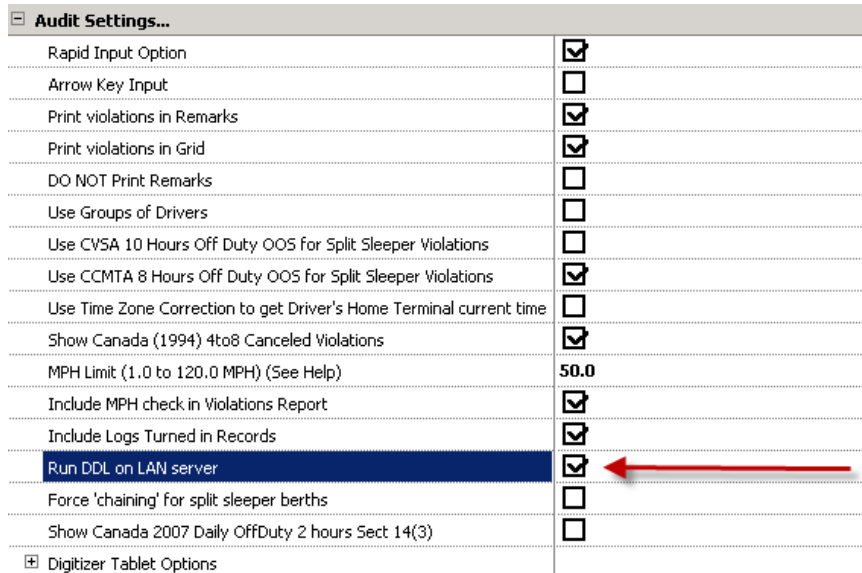


Click on Log Sheet, Records, Reports, Print, Audit...

Open the 'Audit Settings' section:



Locate and check the box for 'Run DDL on LAN server':

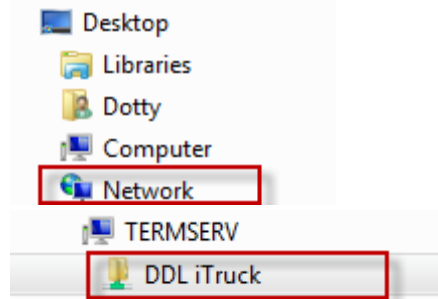


Click OK at the top of the screen.

Configuring DDL iTruck To Run on a Windows2003 Server

Creating A DDL iTruck Shortcut On Desktops:

From a network workstation, browse out to the list of Network Shares:

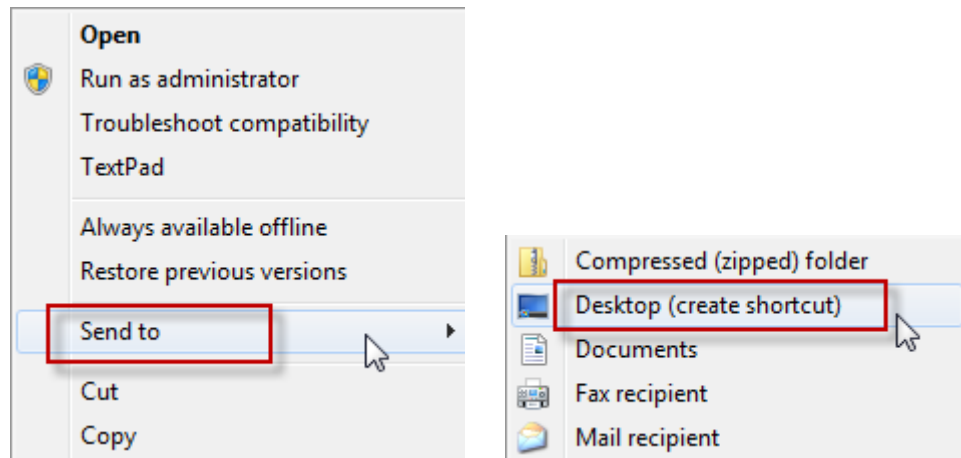


Locate the Server Name where DDL iTruck was installed and locate the Share Name given to the DDL iTruck program during the first step in these instructions.

Double click on the Share Name to open the folder and locate the DDL iTruck program executable file:

Name	Date modified	Type	Size
Dotty Lucas	8/3/2010 2:41 PM	File folder	
DDL iTruck	8/3/2010 2:24 PM	Internet Shortcut	1 KB
DDLclassic.chm	7/9/2006 4:12 PM	Compiled HTML ...	13 KB
DDLclassic.dll	12/30/2009 1:40 PM	Application extens...	358 KB
DDLCommendation.wri	5/7/2009 9:57 AM	WRI File	2 KB
DDLddvir.chm	8/16/2006 12:43 PM	Compiled HTML ...	12 KB
DDLddvir.dll	7/16/2010 8:52 AM	Application extens...	342 KB
DDLiTruck.chm	7/28/2010 3:35 PM	Compiled HTML ...	179 KB
DDLiTruck.exe	7/28/2010 3:43 PM	Application	2,373 KB
DDLiTruck.INI	7/23/2003 4:55 PM	Configuration sett...	1 KB
DDLPCMiler.chm	6/20/2007 1:48 AM	Compiled HTML ...	13 KB

Right click on the executable and choose Send To > Desktop (create shortcut).

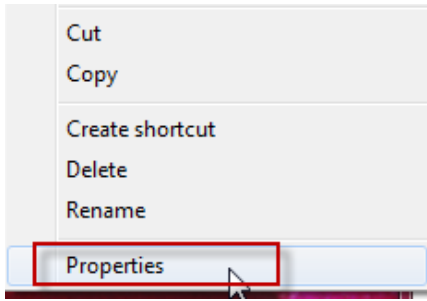


Configuring DDL iTruck To Run on a Windows2003 Server

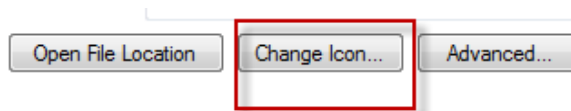
Next, locate the icon on the desktop:



To change the icon from the DDL Road picture to the DDL iTruck picture, right click on the icon:

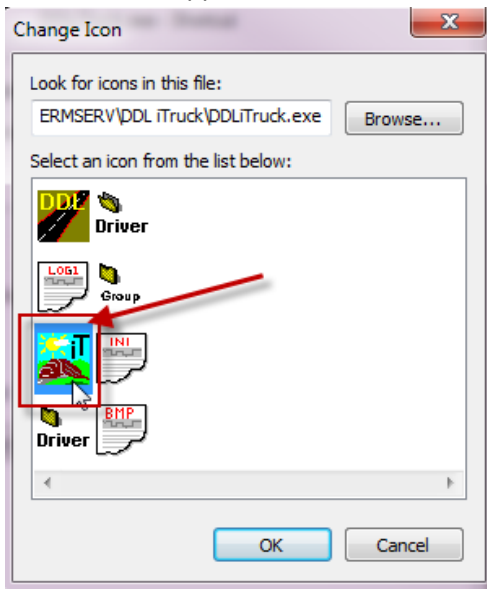


Choose Properties:



Choose the selection for Change Icon:

When the list appears, choose the icon with 'IT' in the icon.



Click OK.

Click  and .

Note: All program updates and activation codes for server installations must be applied on the server.